



TEMPORARY INTERNATIONAL MECHANISM – TIM

Window II

Access to Electricity, Health Care, Water and Sanitation

1 June 2007

■ Introduction



TIM Window II is implemented through the **Interim Emergency Relief Contribution** (IERC) and supports the continued provision of essential services to the Palestinians.

The bombing of the Gaza power generating plant by the IDF in June 2006 resulted in the cutting off of 55% of the power normally available in Gaza. The TIM therefore started an emergency fuel delivery programme to electricity generators of hospitals and other facilities in Gaza (water and sanitation system facilities, pumps and waste water installations).

To date, more than 5.1 million litres of fuel have been delivered to Gaza under the emergency fuel supply programme.

After the partial repair of the Gaza power plant, the TIM started phasing out its emergency programme and resumed fuel deliveries to the plant.

More than 54 million litres were delivered to the Gaza power plant since November 2006.

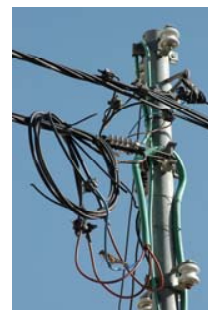
■ Electricity Production and Distribution

Approximately 184 MW/hour is currently available in Gaza against 225 MW/hour needed. In this context, the TIM supports costs related to electricity production and distribution.

The ability of households in the West Bank to pay for basic utilities such as electricity has been seriously affected by the current crisis. To ensure electricity distribution, the TIM supported the Jerusalem District Electricity Company.

The TIM also supported the Gaza Electricity Distribution Company to provide electricity to its account holders living in refugee camps in Gaza.

In addition, the TIM has partially funded other costs of electricity production in Gaza, as well as the distribution of electricity in both the West Bank and Gaza.



■ Access to Quality Health Care



The East Jerusalem hospitals are non-governmental and non-profit making organisations that provide specialised health care services to Palestinian patients in the West Bank and Gaza. When required, the Palestinian Ministry of Health refers patients who need specialised medical treatment to these hospitals. The hospitals are paid by TIM for the services rendered.

In the context of the current financial crisis, in order to ensure access to specialised health care, the TIM covered the costs of patients' referrals incurred in the period between April and August 2006.

■ Monitoring and Auditing

Implementation of the IERC is subject to comprehensive monitoring, control, and auditing.

A dedicated team is in charge of the planning, execution, monitoring and reporting of fuel distribution in Gaza. The team oversees the delivery and usage of fuel in over 200 locations. An international audit firm controls the channelling of fuel from its purchase to the point of use.

The audit process ensures that all invoices submitted to the TIM are appropriately verified.